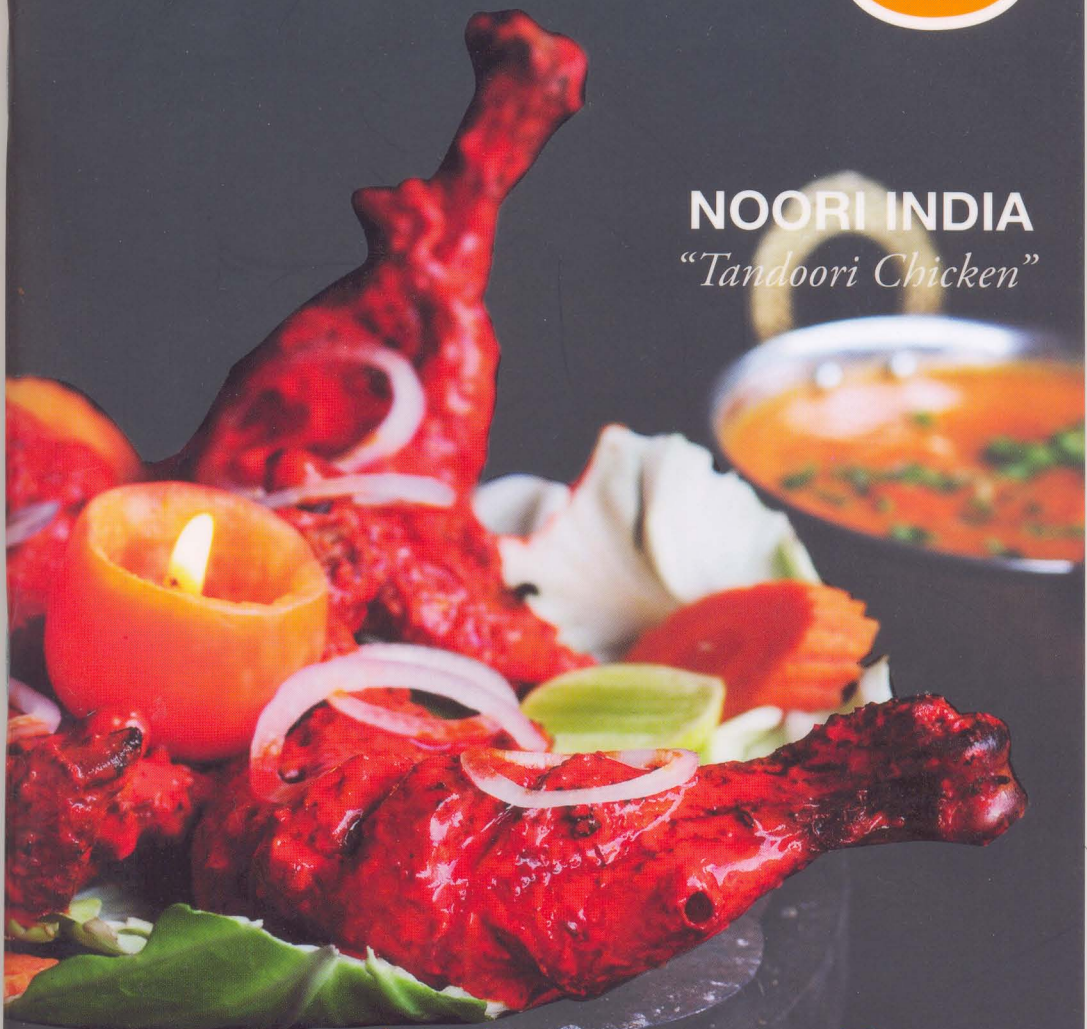


ISSUE 9: OCTOBER 2008

ON SAMUI

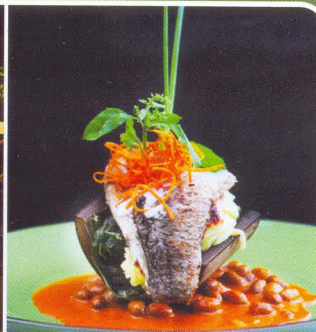
# eating

**NOORI INDIA**  
*"Tandoori Chicken"*



a comprehensive restaurant guide

# 26th Degree



Beach

Coral Cove Chalet ■ **26th Degree** (The Kala Samui Resort) ■ Samui Cliff View Resort & Spa  
 ← To Chaweng Samui Ring Road To Lamai →

Koh Samui's 26th degrees latitude, 26th degrees longitude location are the precise co-ordinates in which the tree coconut flourishes, creating a verdant, dazzling, dream-like quality across the island. It is this dream like quality that The 26th Degree encapsulates. The menu is contemporary fusion, bringing together the best of international cuisine with the tastes of the region, in one of the world's most exotic destinations.

## MENU SAMPLE:

01. The Kala Salad - With marinated Honey Ginger Tofu & Japanese Miso Dressing - 200 Bt
02. Chicken & Cucumber - A refreshing light Salad flavoured with Peanut Sauce - 220 Bt
03. Yam Phak Good Poo Nim - Wild frizzy Shoot Salad with Soft Shell Crab chilli and Coconut Dressin - 230 Bt
04. Green Pea Soup - Cream Soup of fresh Peas with seared Sea Scallops and Chilli O - 210 Bt
05. Tandoori Chicken - 12spice marinated breast of chicken, oven baked and served with Turmeric Rice Mango-Ginger Chutney - 400 Bt
06. Bamboo Baked Fish - White Snapper baked in Thai Bamboo, flavoured with Massaman spices and served on a local Spinach - Potato Gratin - 430 Bt
07. The Kala Mousse - A heavenly light Coconut Mousse with fresh Thai Mango Sauce - 180 Bt

## INFORMATION:

**Contact:** 077 422 671

**Average cost per person:** 900 Bt

**House wine per bottle:** 980 Bt

**Credit cards:** Visa, Master, Amex

**Service & Tax:** 7% Tax and 10% Service Charge

**Popular Dish:** Bamboo Baked Fish (No.6)

**Open from:** 06:00 to 23:00

**Web:** [www.thekalasamui.com](http://www.thekalasamui.com)

FOR TAXI: ร้านตั้งอยู่ใน  
โรงแรม เดอะกะลามูวีสอร์ท  
ใกล้กับ โรงแรมคอรัลโคฟชาเล่

